

# 476 Who Are You Who Walk in Sorrow



1 Who are you who walk in sor - row Down Em - ma - us'  
 2 Who is this who joins our jour - ney, Walk - ing with us  
 3 Who are You? Our hearts are o - pened In the break - ing  
 4 Who are we who trav - el with You On our way through  
 5 "Al - le - lu - ia! Al - le - lu - ia!" Is the Eas - ter



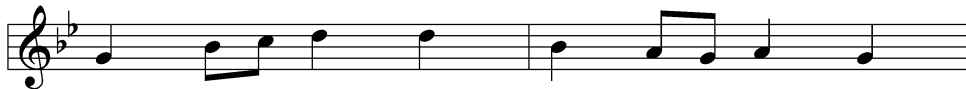
bar - ren road, Hearts dis - traught and hope de - feat - ed,  
 stride by stride? Un - known Strang - er, can You fath - om  
 of the bread— Christ the vic - tim, now the vic - tor  
 life to death? Wom - en, men, the young, the ag - ing,  
 hymn we sing! Take our life, our joy, our wor - ship



Bent be - neath grief's crush - ing load? Name - less mourn - ers,  
 Depths of grief for one who died? Then the won - der!  
 Liv - ing, ris - en from the dead! Great com - pan - ion  
 Wak - ened by the Spir - it's breath! At the font You  
 As the gift of love we bring. You have formed us



we will join you, We who al - so mourn our dead;  
 When we told You How our dreams to dust have turned,  
 on our jour - ney, Still sur - prise us with Your grace!  
 claim and name us, Born of wa - ter and the Word;  
 all one peo - ple Called from ev - 'ry land and race.



We have stood by graves un - yield - ing,  
 Then You o - pened wide the Scrip - tures  
 Make each day a new Em - ma - us;  
 At the ta - ble still You feed us,  
 Make the Church Your ser - vant bod - y,



Eat - en death's bare, bit - ter bread.  
 Till our hearts with - in us burned.  
 On our hearts Your im - age trace!  
 Host us as our ris - en Lord!  
 Sent to share Your heal - ing grace!

Tune: Public domain  
 Text: © 2000 National Association of Pastoral Musicians. Used by permission: LSB Hymn License no. 110005782